



# FORWOOD



Forward



Share



Share



Tweet

September 2018



**Ric Sinclair**  
Managing Director  
0407 329 372

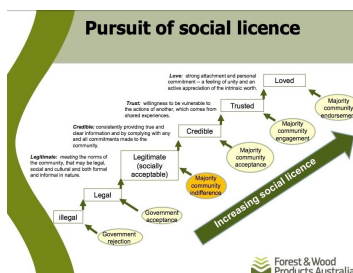
Dear << Test First Name >>,

We have plenty to report on, including a productive symposium on the critical importance of maintaining the industry's social licence to operate. We provided bursaries for outstanding students to attend the World Conference on Timber Engineering in Seoul and we launched our WoodSolutions Young Professionals Network. The Mid-rise Advisory Program is involved with leading-edge timber tower projects and we have released data on the contribution of the forest industry to Victoria's economy. It's an exciting time to be involved in our industry.

## FWPA AGM coming up

FWPA's AGM will be followed by the launch of a full-scale, three-storey demonstration building.

[Read more](#)



## Social licence will help drive industry credibility

A recent FWPA symposium attended by 70 forest and wood products industry participants from around Australia examined the state of the industry's social licence to operate (SLO) and identified sector-wide strategies for building the community trust and industry credibility required

for a robust SLO.

[Read more](#)

---

## Forest industry socio-economic trends: research

The forest industry contributed \$7.3 billion to the Victorian economy and almost \$1.3 million to that of Tasmania, according to new socio-economic research funded by the FWPA.

[Read more](#)



## Softwood Processors Safety Data Series

FWPA is developing opportunities to improve the way we collect industry statistics in a number of key areas, such as safety. A specific data-sharing portal has been established for the aggregation of safety data and FWPA is providing support to the Softwood Processors Workplace Health and Safety Interest Group.

[Read more](#)

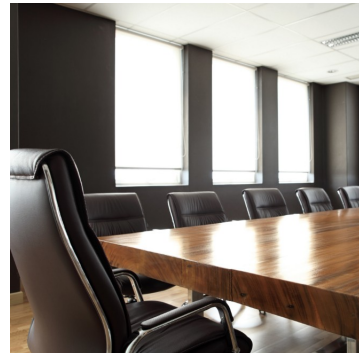
**Sign up for a free Statistics Count Newsletter.** Statistics Count is a monthly e-newsletter that provides FWPA members and associate members with a quick summary of key data hosted on the data dashboard. It also provides links to key data sets and coverage of articles of relevance from industry commentators.

---

## Nominations for FWPA non-executive directors

FWPA is pleased to announce the nomination of two new candidates and the renomination of two sitting directors for the board of FWPA.

[Read more](#)



## WoodSolutions Young Professionals Network kicks off

The free networking events provide opportunities for early career practitioners to develop useful contacts and enhance their knowledge of industry issues.

[Read more](#)

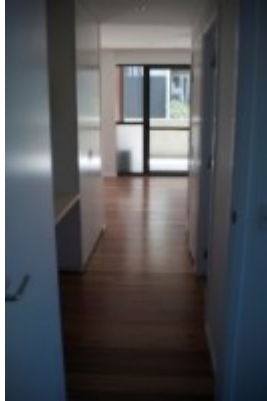
---

**FWPA sponsors students to attend WCTE 2018**



For the last eight years, FWPA funding has allowed outstanding students to attend the World Conference on Timber Engineering (WCTE).

[Read more](#)



## Interest soars in wood solutions for mid-rise buildings

The WoodSolutions Mid-rise Advisory Program (MAP) team has been busy with an increasing number of enquiries and project discussions on larger mid-rise scale residential proposals, as well as exploring the use of engineered timber for the expansion of large existing retail complexes.

[Read more](#)

**Sign up for a free WoodSolutions account.** As a registered WoodSolutions member you'll be able to download design guides and other files, be informed of relevant WoodSolutions events in your area and receive the free WoodSolutions newsletter.

## Consumer campaign hits the spot

FWPA's June TV campaign performed extremely well, over-delivering on planned target audience rating points (TARPs) across all markets, by up to 88%. The campaign was particularly well received by viewers of programs such as *House Rules*, *The Voice* and *Seven News*.

[Read more](#)



UAV's fitted with specialist cameras and 'koala-identification' algorithms to detect koalas before tree harvesting.

## Industry investment in research reaps results

Recent successes in the Voluntary Matching program have included diverse projects such as: koala location research using drones, an analysis of cross-laminated timber acoustic performance and a pilot study using radiata pine plantations.

[Read more](#)

**Sign up to receive the research and development newsletter R&DWorks**

## New podcast *WoodChat* to highlight the latest Australian forest and wood news

FWPA is excited to announce the launch of its inaugural podcast series, *WoodChat*. Each episode in the series will include an in-depth conversation with experts on a different industry-related news story, discovery or innovation.

[Read more](#)



## Latest round of Dangerous Designs winners

Launched in 2016, [Dangerous Designs](#) is an online competition to promote the use of wood and wood products in sustainable design and encourage the commercialisation of appropriate designs. The competition is sponsored by WoodSolutions, resourced by Forest and Wood Products Australia and supported by a wide range of professional organisations, including the Design Institute of Australia, the Australian Furniture Association, the Australian Institute of Architects and Planet Ark.

[Read more](#)

## Feedback and contributions



Forward



Share



Share



Tweet

Copyright © 2018 **FWPA**, All rights reserved.

You are receiving this email as you have registered to the FWPA Newsletter

### Our mailing address is:

FWPA  
Level 11, 10-16 Queen Street  
Melbourne, Vic 3000  
Australia

[Add us to your address book](#)

Want to change how you receive these emails?

You can [update your preferences](#) or [unsubscribe from this list](#)

