

R&Dworks

June 2018



Chris Lafferty
R&D Manager

Dear << Test First Name >>,
The past few months have seen a number of significant developments in our collaborative projects. These include a new, easy-to-use online tool to predict the future impacts of climate change on specific forest growing areas, and a new treatment that improves the bond strength of hardwood when coatings or adhesives are applied. FWPA is also pleased to announce the appointment of international expert Professor Jeff Morrell to the Centre for Timber Durability and Design Life.

New surface treatment to boost hardwood building components' spanning capability

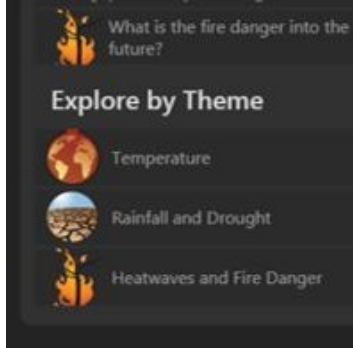
A new mystery surface treatment developed by the CSIRO is set to enhance the viability and desirability of hardwood components in construction, by improving bond strength when adhesives and coatings are applied.

[Read more](#)



Predict forestry climate change with the click of a mouse thanks to new tool

Forest managers will be able to gauge the likely effect of climate change on growing conditions in their specific areas with a new interactive online tool developed by the



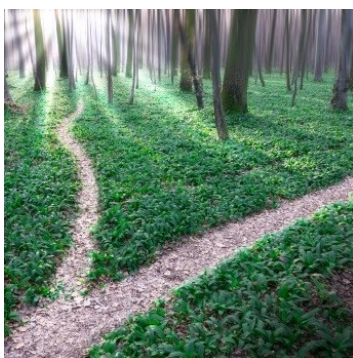
CSIRO with funding from FWPA.

[Read more](#)

Climate case study – Mount Gambier, SA, in 2050

See how the new Forest Climate Risk Tool enables us to ascertain likely changes to temperature, rainfall, days of extreme heat and high fire danger. With this information, further modelling suggests a likely reduction in harvest.

[Read more](#)



FWPA seeks industry feedback on the value of suggested future projects

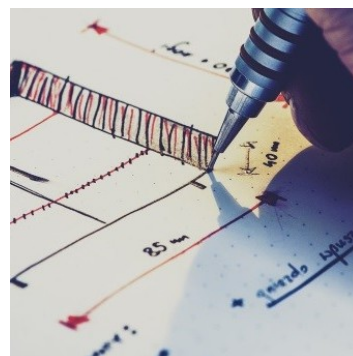
Industry members are invited to deliver their verdicts on a number of proposed projects relating to data analysis and forecasting, as outlined in a newly-released industry consultation document.

[Read more](#)

Distinguished international expert appointed to the National Centre for Timber Durability and Design Life

Professor Jeff Morrell of Oregon State University has been appointed as Director of the National Centre for Timber Durability and Design Life for a term of five years.

[Read more](#)



Alcohol made from wood looks set to become a reality

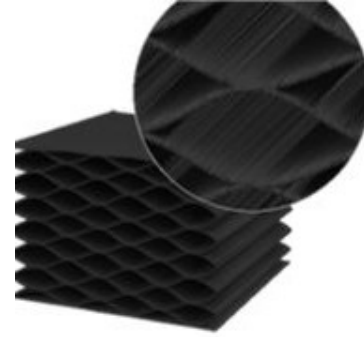
Alcoholic beverages with flavours reminiscent of whisky aged in wooden barrels have been produced by fermenting cedar, white birch and cherry trees.

[Read more](#)

Scientists transform balsa into 'wood carbon sponge'

A new ‘wood carbon sponge’ that can endure extreme conditions could be used in products including strain sensors found in wearable health-monitoring electronics, water-purification devices and energy storage and conversion technologies.

[Read more](#)



Mixed multi-species forests boast higher yields

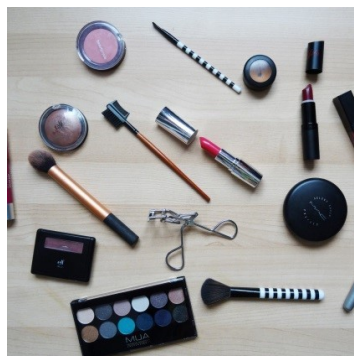
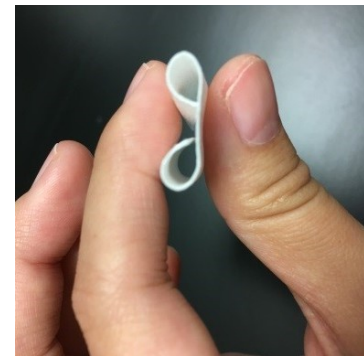
A team of researchers have found that trees grown in an environment surrounded by different species produce more wood than those surrounded by trees of the same species.

[Read more](#)

Innovative new material “nanowood” offers improved insulation

Meet nanowood: a new material with insulation properties capable of blocking at least 10 degrees more heat than Styrofoam that’s also stronger and more environmentally friendly.

[Read more](#)



Cosmetics industry receives a boost from birch

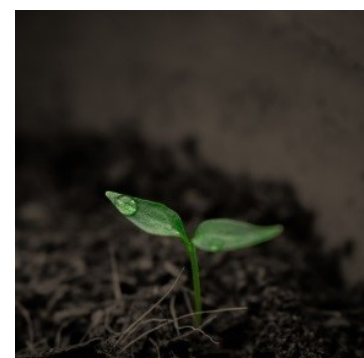
New research out of Finland has successfully showcased how plant cell culture technology can be used to develop natural compounds with attributes that could potentially revolutionise the cosmetics industry.

[View here](#)

“Magic” mushrooms could hold the key to boosting the sapling survival

A new project is experimenting with a special mix of mushroom spores to help saplings better survive in hostile conditions.

[Read more](#)



Robots enable increasingly complex wooden constructions

A new construction method developed by Swiss engineers is using robotic arms to fabricate and



assemble the wooden parts of buildings so geometrically complex they would previously have been impossible to construct using timber.

[View here](#)



Copyright © 2018 **FWPA**, All rights reserved.
You are receiving this email because you opted in at our website.

Our mailing address is:

FWPA
Level 11, 10-16 Queen Street
Melbourne, Vic 3000
Australia

[Add us to your address book](#)

Want to change how you receive these emails?
You can update your preferences or unsubscribe from this list