

R&Dworks

November 2018



Chris Lafferty
R&D Manager

Dear <<First Name>>,

Welcome to the latest edition of R&DWorks.

We have a diverse range of articles this month, with a combination of basic and applied research reports to share with you.

A recurring theme is the challenge presented to our industries by the impact of the climate.

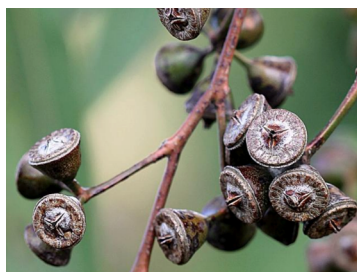
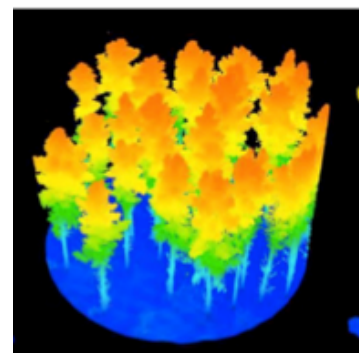
There is also plenty of positive news from the R&D sector as new technologies continue to expand the potential for increasing efficiency and market opportunities in our industries.

Enjoy.

New technology to remotely assess individual trees

While foresters don't necessarily have to abandon their diameter tapes and vertex hypsometers, there is no denying that rapidly-evolving remote sensing technologies are revolutionising forest management practices.

[Read more](#)



Gumnut babies thrive if mother well cared for

Flooded gum (*Eucalyptus grandis*) seedlings' growth rates can be affected by the growing conditions the parent plants experienced.

[Read more](#)

Wood density at risk in changing growing conditions

Global warming and changes in weather patterns are affecting tree growth and may have a significant economic impact on the forest and wood products industries worldwide. This will also affect Australia but for different reasons.

[Read more](#)



Bees benefit from tidy forest floor

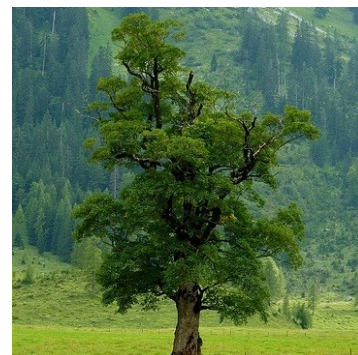
In the US, the removal of timber harvest residue during harvesting may be a benefit for wild bees

[Read more](#)

Tree ranges shifting

It's not exactly Macbeth's dreaded Birnam Wood, but some forests appear to be on the move.

[Read more](#)



To prune or not to prune, that is the question

Heartwood rot (a fungal disease) has the potential to significantly reduce sandalwood oil production from *Santalum album*.

[Read more](#)

Wood pellets need special handling

In Australia's export market, wood pellets remain in the shadow of woodchips, but globally the demand is growing rapidly.

[Read more](#)



Improving export supply chain efficiency

An FWPA-funded project is analysing wood export supply chain management from various angles, including value and quality assessment, measurement and inventory assessment, phytosanitary testing and wood loading technologies.

[Read more](#)

Bend, don't break

The load-carrying capacity of laminated veneer lumber hasn't been its strongest selling point in the past, but research from Deakin University has shown interesting results.

[Read more](#)



Copyright © 2018 **FWPA**, All rights reserved.

Want to change how you receive these emails?
You can [update your preferences](#) or [unsubscribe from this list](#)
